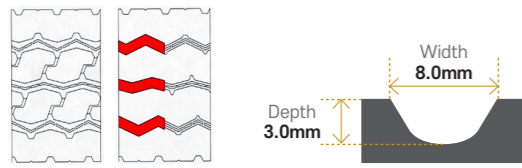


Mixed Service

KMA11



- Variable groove angle increases durability until the end of tire life
- Optimization of tread block design provides even wear
- Application of stable 'Zig-Zag' grooves optimizes 'stop and go' driving

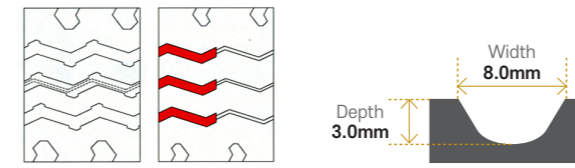


Rim	Tire Size	Ply Rating	Measuring Rim Width	Approved Rim Width	Max. Air Pressure		Max. Load		Section Width		Overall Diameter		Tread Depth		Static Loaded Radius		Rolling Circumference	
					bar	psi	kg	lbs	mm	inch	mm	inch	mm	x/32"	mm	inch	mm	RPM
Tubeless																		
22.5"	13 R22.5 S 156 K	18	9.75	9.00	8.30	120	3750	8270	319	12.6	1129	44.4	18.5	23.3	523	20.6	3443	467
	275/80 R22.5 S 149 K	16	8.25	7.50	8.30	120	3250	7160	287	11.3	1035	40.7	17.5	22.0	483	19.0	3157	510
275/70 R22.5 S 148 K	16	8.25	7.50	9.00	130	3150	6940	277	10.9	973	38.3	18.5	23.3	451	17.8	2968	542	
																		D 145

KMA03



- Aggressive rib/all position for both on and off road conditions
- Special groove geometry to eliminate pattern damage and stone trapping
- Special tread compound increases the resistance to cutting and chipping



Rim	Tire Size	Ply Rating	Measuring Rim Width	Approved Rim Width	Max. Air Pressure		Max. Load		Section Width		Overall Diameter		Tread Depth		Static Loaded Radius		Rolling Circumference	
					bar	psi	kg	lbs	mm	inch	mm	inch	mm	x/32"	mm	inch	mm	RPM
Tubeless																		
22.5"	12 R22.5 S 152 K	16	9.00	8.25	8.30	120	3350	7390	292	11.5	1086	42.8	18.0	22.7	504	19.9	3312	486
	11 R22.5 S 148 K	16	8.25	7.50	8.30	120	3000	6610	276	10.9	1056	41.6	18.5	23.3	492	19.4	3221	500
	315/80 R22.5 S 156 K	20	9.00	9.75	9.00	130	4080	9000	310	12.2	1078	42.4	18.0	22.7	501	19.7	3288	489
295/80 R22.5 S 152 K	16	9.00	8.25	8.30	120	3550	7830	299	11.8	1050	41.3	18.0	22.7	489	19.3	3203	502	
																		D 148
Tube Type																		
24"	325/95 R24 S 162 K	22	8.50	9.00	8.60	125	4750	10500	317	12.5	1218	48.0	18.5	23.3	563	22.2	3691	436